



## Assembly Guide

# **Model 250**

NUC Enclosure

### **Radio Frequency Interference Notice (USA)**

This equipment has been tested and found to comply with the limits for a Class B digital device, pursuant to Part 15 of the FCC Rules, **unless otherwise stated in the product specific Assembly Instructions**. These limits are designed to provide reasonable protection against harmful interference in a residential installation. This equipment generates, uses, and can radiate radio frequency energy and, if not installed and used in accordance with the instructions, may cause harmful interference to radio communications. However, there is no guarantee that interference will not occur in a particular installation. If this equipment does cause harmful interference to radio or television reception, which can be determined by turning the equipment off and on, the user is encouraged to try to correct the interference by one or more of the following measures:

- Reorient or relocate the receiving antenna.
- Increase the separation between the equipment and the receiver.
- Connect the equipment into an outlet on a circuit different from that to which the receiver is connected.
- Consult the dealer or an experienced radio/TV technician for help.

Any changes or modifications not expressly approved by the grantee of this device could void the user’s authority to operate the equipment. The customer is responsible for ensuring compliance of the modified product.

Only peripherals (computer input/output devices, terminals, printers, etc.) that comply with FCC class B limits may be attached to this computer product. Operation with noncompliant peripherals is likely to result in interference to radio and TV reception.

All cables used to connect to peripherals must be shielded and grounded. Operation with cables, connected to peripherals that are not shielded and grounded may result in interference to radio and TV reception.

**Manufacturer: SySTIUM® Technologies, LLC**  
**New Hope, MN**  
**763-537-3600**

**Contact: Customer Support**

### **Radio Frequency Interference Notice (CDN)**

This Class B digital apparatus complies with Canadian ICES-003.

Cet appareil numérique de la classe A est conforme a la norme NMB-003 du Canada.

### **Declaration of the Manufacturer or Importer**

This system is compliant with Low Voltage Directive 2006/95/EC using the standard EN60950- 1:2006/A11:2009/A1:2010/A12:2011, (IEC 60950-1:2005 (2nd Edition); Am 1:2009).

This system is compliant with EU directive 2004/108/EC using the standards EN55022 and EN55024.

### **Disclaimer Statement**

SySTIUM® Technologies makes no warranty of any kind with regard to this material, including, but not limited to, the implied warranties of merchantability and fitness for a particular purpose. SySTIUM® Technologies assumes no responsibility for any errors that may appear in this document. SySTIUM® Technologies makes no commitment to update nor to keep current the information contained in this document. No part of this document may be copied or reproduced in any form or by any means without prior written consent of SySTIUM® Technologies.

† Third-party brands and trademarks are the property of their respective owners.

# ASSEMBLY GUIDE

## Assembly Safety Instructions

Assembly of a computer system using this product shall be assembled only by technically qualified personnel. Follow the instructions in the document “Model 250 Maintaining Regulatory Compliance” to meet and maintain the safety and product regulatory compliance of this product when assembling a computer system using this product.

### **⚠ WARNINGS**

*Read and adhere to all of these instructions and instructions supplied with this assembly. Failure to follow these instructions will result in voiding the product regulatory compliance statements. The computer system will most likely be noncompliant with other regional product laws and regulations.*

The procedures in this document assume familiarity with the general terminology associated with personal computers and with the safety practices and regulatory compliance required for using and modifying electronic equipment.

### **⚠ WARNINGS**

**TO PREVENT ACCESS TO HIGH ELECTRICAL ENERGY PARTS, DO NOT REMOVE THE COVERS WHILE THE SYSTEM IS POWERED ON!**

*Do not open the power supply. The power supply in this computer contains no user-serviceable parts. To avoid personal injury or damage to your equipment, refer repair or replacement of the power supply to qualified technical personnel only. All other areas and components of this computer are considered user-accessible.*

### **⚠ CAUTIONS**

*Electrostatic discharge (ESD) can damage disk drives, add-in cards, and other components. Do the procedures described in this chapter only at an ESD workstation. If such a station is not available, you can provide some ESD protection by wearing an anti-static wrist strap and attaching it to a metal part of the chassis.*

*Motherboards can be extremely sensitive to ESD and always require careful handling. After removing the board from its protective wrapper or from the computer, place the board flat on a grounded, static-free surface, component side up. Use a conductive foam pad (if available) but not the board wrapper. Do not slide the board over any surface.*

*For proper cooling and airflow, always close the chassis before turning on the computer system. Operating the computer system without the chassis closed can damage system parts.*

*This system after final integration will weigh 6 lbs or more. Handle Carefully.*

## Before You Begin

1. Be sure to follow each procedure in the correct order.
2. Set up an equipment log to record the computer’s model and serial numbers, all installed options, and other information about the computer. This information must be saved as a record of the product’s configuration and compliance with the allowable configuration options.
3. We recommend that you use an anti-static wrist strap and a conductive foam pad when working on the computer.
4. You will need a Phillips (#1 and #2 bits) screwdriver and a flat tip pliers for assembly

## Unpack the System

Systium Technologies ships the Model 250 in a reusable “End-User ready” single package.

**CAREFULLY UNPACK THE COMPUTER.** Save the box and packaging material for shipment to the customer. If components are missing please contact your supplier or Systium Technologies.

## CONTENTS

**The Model 250 System product contains the following:**

- ✓ Model 250 Chassis assembled with:
- ✓ Top and bottom panels
- ✓ 6/32 x 1/4” Undercut Flat screws – Black-q2
- ✓ Integration Kit
- ✓ Quickstart Guide. **(This manual must be included in shipment to the End User.)**
- ✓ Assembly Guide



**Integration Kit Contents:**

Screw Kit includes:

- Two (2) 4/40 x 1/4" – motherboard mounting
- Two (2) 6/32 x 1/4" – motherboard mounting

**Opening the System**

- Remove the Model 250 from the foam bag. Save items for shipping assembled computer.
- Place unit on work space in horizontal position.

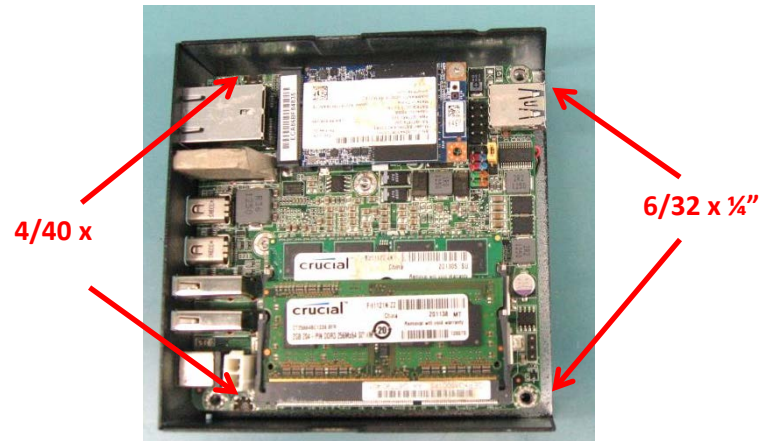


FIGURE 5

**Unit Disassembly**

1. Remove the two (2) screws holding the top and bottom assemblies together. Figure 3.



FIGURE 2

2. Separate the top and bottom halves. Figure 4.



FIGURE 4

**Installing Motherboard onto Bottom Plate**

The SySTIUM Model 250 enclosure was designed to accommodate the Intel NUC motherboards and provides for connector access by cut outs in the bottom plate.

1. Install motherboard.  
Install the Motherboard using the two (2) 4/40x1/4" screws from Integration Kit for the 2 hold downs by the front I/O connector array and use the two 6/32 x 1/4" screws for the back 2 hold downs. See Figure 5

2. Install Memory and mSATA.  
Install the memory DIMMs and mSATA as show in Figure 5.

**Attaching Top and Bottom Plates**

Carefully slide the bottom plate over the top plate assembly and replace the two (2) screws holding the top and bottom assemblies together. See the figures 6, 7, and 8.



FIGURE 6



FIGURE 7



FIGURE 8

**Power up the System**

- Attach the ST065-19AD to the Model 250.
- Attach peripherals needed to operate the computer system.
- Turn on the computer by pressing the power switch on the rear panel. Refer to the Quick Start manual for more information.
- Test the complete operation of the computer using a known good computer functional test program
- Install any required operating system or application software.
- Disconnect the computer from the peripherals used during the testing phase. Package the computer using the original packaging.



FIGURE 9

**NOTE:**  
 You must include the End User Quick Start manual in the shipment to the customer to maintain Regulatory Compliance.

**Appendix 1: Wall Mounting Instructions**

For wall mounting the Model 250 you will need:

- a. Level
- b. Tape Measure
- c. Screwdriver (Philips #2)
- d. Screws (# 10 screw, .75in minimum) recommended)
- e. Marker

Optional:

- f. Wall Anchors

**NOTE: The Model 250 weighs approximately 1.1 lbs. The wall should be able to support 6lbs.**

**NOTE: Orientation- The Model 133's intended mounting is vertical with I/O shield and cables on the top. Any orientation other than the I/O Shield and cables on the top will Null & Void the safety certifications.**

1. Mark two (2) holes 4 5/8" inches (11.7cm) apart and level.
2. Drill holes.
  - a. It is preferred to drill into stud walls, or plywood 1/2" thick. If neither is available wall anchors will be needed.
3. Mount Model 250 with two (2) screws onto the wall as shown in Figure 13 below.



FIGURE 10