



Model 250-NUC

Enclosure

SySTIUM® Technologies has developed an enclosure for Intel®'s Next Unit of Computing (NUC) motherboard; Celeron, i3 and i5. The Model 250 is a SySTIUM® Express Enclosure™ which allows for customization. This unit has been tested and cools better than off the shelf units. Mounting is made easy with dual tabs. The Model 250 comes with a 19V 65W AC/DC Power adapter and US power cord.



*motherboard not included

MODEL 250 FEATURES

- Dimension (mm) 110x107x34
- Two mounting tabs
- 1x WLAN antennae cutout
- Durable black powder coat
- Easily Customizable

ORDERING INFORMATION:

PN 25000-00-65R

Works with Intel® Celeron and i3 NUC boards:
i3: D33217GKE, DC3217IYE
Celeron: DCP847SKE

PN 25001-00-65R

Works with Intel® NUC Boards:
i5:D53427RKE

PN 25002-00-65R

Works with Intel® NUC Boards:
i3: D34010WYB
i5:D54250WYB

65W Power Adapter Features (10619-65)

- Full Range AC Input
- Meets Energy Star EPS 2.0/ ErP Lot 7
- With PFC Circuit
- C8 AC input, US Power cord incl.

Specifications:

- Input Freq. 47-63Hz
- Over Current Protection
- Over Temperature Protection
- Over Voltage Protection
- Operating Temperature: 0 ~ +40C
- Storage Temperature: -30 ~ +60C

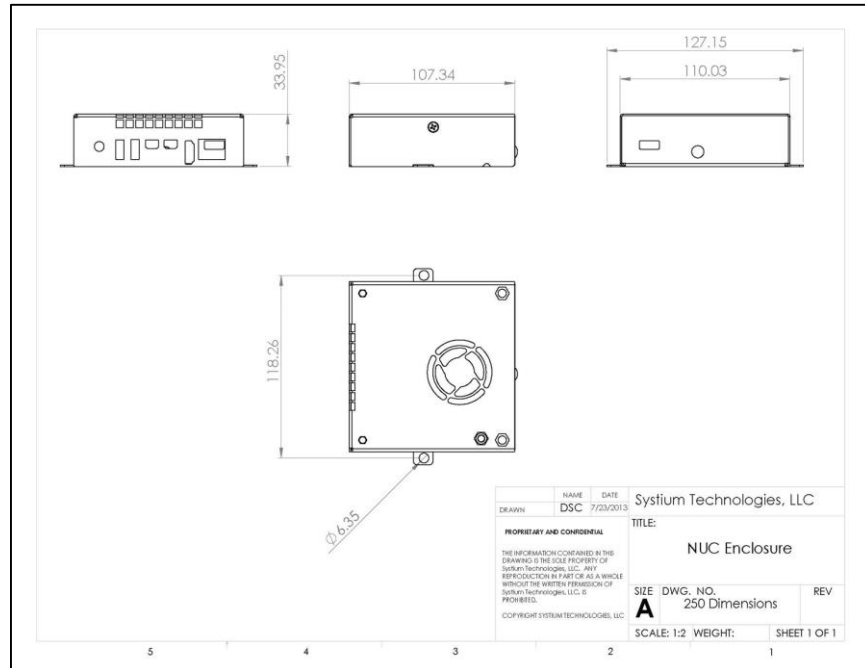
Certifications:

- EMC-EN55022 Class B
- EMC EN55024 Class B
- Safety CB, TUV, UL/cUL, FCC, CE, NOM
- MTBF: 100K hrs@ 25C





Model 250 Dimensions (mm)



PN25000-00 shown



Customizing is easy! What color would you like?

Additional Information

Part number	Description
25000-00	NUC Enclosure only; D33217GKE, DC3217IYE
25001-00	NUC Enclosure only; D53427RKE
25002-00	NUC Enclosure only; D34010WYB, D54250WYB
10619-65	Power Adapter, 19V, 65W, includes power cord
10619-90	Power Adapter, 19V, 90W, includes power cord